



HAWAII'S AGING NETWORK

AN OVERVIEW OF PROGRAMS FOR FAMILY CAREGIVERS

Legislative Family Caregivers Working Group (SCR107)

August 20, 2015

State Capitol, Room 329

AGENDA TO ADDRESS THE FOLLOWING

- Role of the Executive Office on Aging, the County Office of Aging, Aging & Disability Resource Centers, and other community organizations in (a) training/instructing family caregivers; and (b) providing general assistance/support to family caregivers;
- Explanation of funding sources/mechanisms for Executive Office on Aging and County Office on Aging;
- Overview of the community resources and/or support services available for family caregivers;
- Challenges facing operations of Executive Office on Aging and County Offices on Aging to “provide support & coordination necessary for ‘individualized, self-directed, community-supported’ life” and other statutory mandates; and
- Opportunities for legislators/policy makers to improve (a) training/instruction of family caregiver, and (b) ongoing support of family caregivers.



STATE UNIT ON AGING (SUA)

- The Executive Office on Aging (EOA) is designated as the SUA in the State of Hawaii. EOA serves as the lead advocate, facilitator, planner, policy developer, and evaluator relative to all aging and family caregiving issues in the State.
- Entity responsible for allocating federal and state appropriations to the Planning and Services Areas.

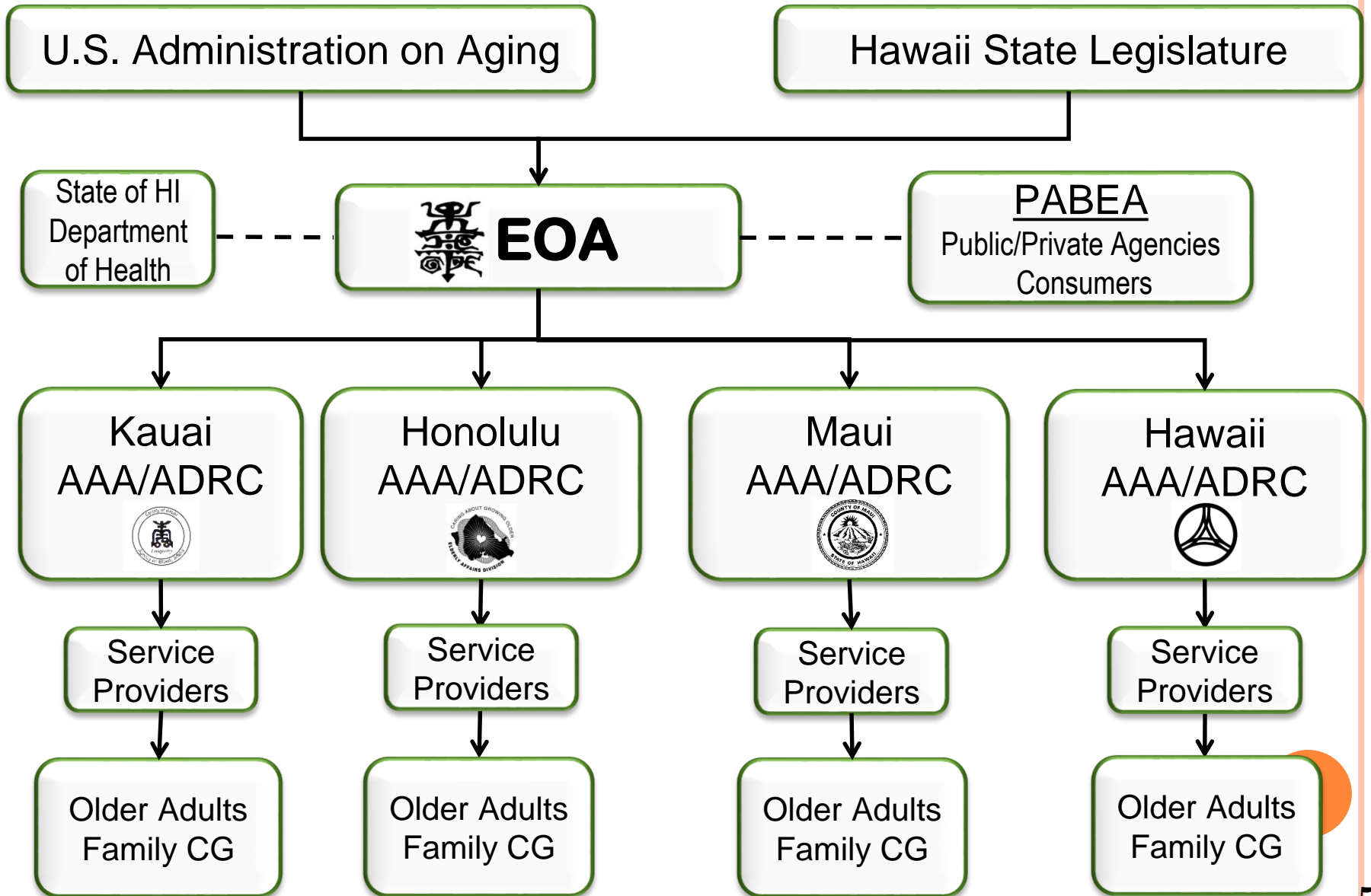


LEGAL FOUNDATION OF THE EXECUTIVE OFFICE ON AGING

- Older Americans Act (OAA)
 - Created the National Aging Network
 - Provides federal funding for programs and services for older adults (60 years and older), and family caregivers.
 - Priority goes to those with Greatest Social and Economic need, with emphasis on low-income, minority, limited English proficiency and older adults residing in rural areas.
- Hawaii Revised Statutes 349 (HRS)
 - Established the EOA and articulates the general provisions of the office.



HAWAII'S AGING NETWORK



POLICY ADVISORY BOARD FOR ELDERLY AFFAIRS (PABEA)

- EOA receives community input through PABEA.
- PABEA membership consists of older adult consumers, service providers, and others in the field of aging.
- The Governor, with the consent of the State Senate, appoints all members except ex-officio members. Ex-officio members are selected from various state departments that work closely with EOA on matters pertaining to aging and family caregiving.



AREA AGENCIES ON AGING

- Each county in the State of Hawaii has an Area Agency on Aging (AAA). Each AAA is responsible for planning, developing and the administration of services to older adults and family caregivers residing in their distinct geographic Planning and Service Area.
- The AAAs are the designated operating entities of the Aging and Disability Resource Center (ADRC).



PROVIDERS

- Each AAA contracts with service providers in their geographic area.
- Services contracted include: chore services, adult day care respite, homemaker/housekeeping services, assisted transportation, legal assistance, attendant care, case management, congregate meals, personal care assistance, transportation, home-delivered meals, and family caregiver services.



FUNDING SOURCES AND MECHANISMS FOR LONG TERM SERVICES AND SUPPORTS (LTSS)

- Older Americans Act of 1965, as amended 2006
 - Title III
 - B – Supportive Services
 - C1 – Congregate Dining
 - C2 – Home Delivered Meals
 - D – Healthy Aging
 - E – National Family Caregiving Support Program
- Kupuna Care State Funds
- Allocated through the current Intrastate Funding Formula (IFF)¹
 - Uses Census data as a determination of funds

¹ *State Plan on Aging 2011 – 2015: Appendix D – Intrastate Funding Formula*



NATIONAL FAMILY CAREGIVING SUPPORT PROGRAM (OAA - TITLE III E)

- A system of support services for family caregivers and grandparents, to complement the care provided by caregivers.
 - Information
 - Assistance in Gaining Access to Services
 - Individual Counseling/Support Groups/Training
 - Respite Care
 - Supplemental Services (limited basis)
- Consumer of this program is the family caregiver
 - An adult family member, or another individual, who is an informal provider of in-home and community care to a person 60 years or older, or a person with Alzheimer's Disease or related disorder
- Programming is County Specific

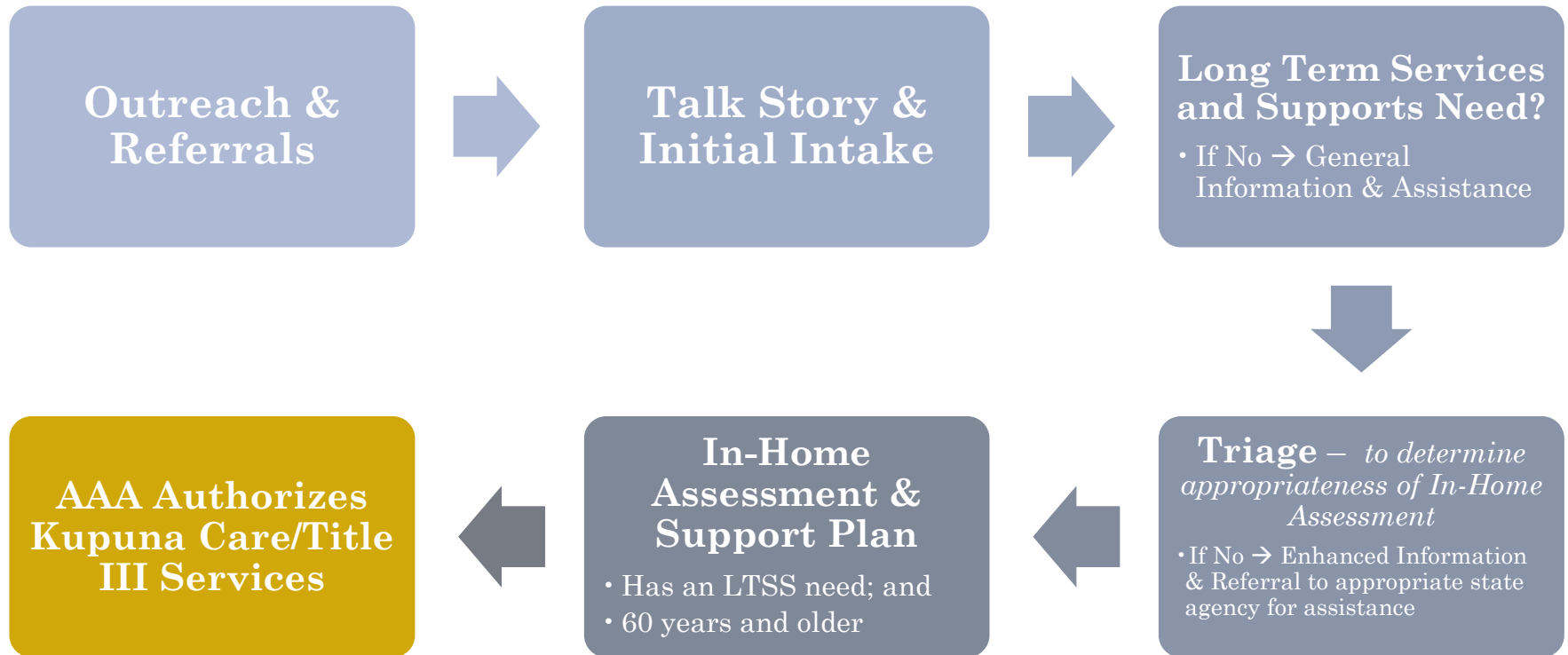


AGING AND DISABILITY RESOURCE CENTER - OVERVIEW

- The highly visible and trusted source where people of all incomes and ages can turn for information on the full range of long-term support options *and* access to publicly funded long-term support programs and benefits
- Primary Functions of an ADRC
 - Information and Assistance
 - Options Counseling
 - Streamlining Eligibility for LTSS
 - Quality Assurance and Continuous Improvement



AGING AND DISABILITY RESOURCE CENTER: GENERAL PROCESS



* Implementation of the process may vary slightly based on county operations.

KAUAI COUNTY

TITLE III E PROGRAMS

Caregiving Support Programs are provided by:

- Alzheimer's Association, Aloha Chapter—services include individual counseling, caregiver training, support group sessions and information.
- Child & Family Service—services include support group meetings and respite care for Grandparents/Ohana raising children.



MAUI COUNTY

TITLE III E PROGRAMS

- **Adult Day Care Respite Services**: Includes full-day respite, available seven (7) days a week.
- **Family Caregiver Counseling, Support, Training and Education**: Includes individual and group sessions that occur regularly and by appointment on all three Maui County islands.
- **Legal Assistance for Grandparents Raising Grandchildren**: Assists with legal issues regarding guardianship, powers of attorney adoptions, school issues, etc.
- **In-Home Respite**: Provides in-home respite care when Adult Day Care is not an appropriate option.



MAUI COUNTY

TITLE III E PROGRAMS

- **T-Care:** Caregiver focused assessment to determine which supportive programs match each caregiver the best
- **Caregiver Meals:** Providers home delivered meals to caregivers of eligible participants
- **Annual Caregivers Conference:** Reaches an audience of up to 350 caregivers each November



HONOLULU COUNTY

TITLE III E PROGRAMS

Type of Service	Providers
<p>Caregiver Support</p> <ul style="list-style-type: none"> ▪ Counseling ▪ Support Groups ▪ Caregiving Training ▪ Information Services 	<p>Project Dana University of Hawaii Elderly Law Program Hawaii Family Services Alzheimer's Association of Hawaii Kokua Kalihi Valley Child and Family Services</p>
<p>Caregiver Access</p> <ul style="list-style-type: none"> ▪ Case management (access assistance) ▪ Supplemental Services (misc. assistance) 	<p>Child and Family Services University of Hawaii Elderly Law Program</p>
<p>Caregiver Respite</p> <ul style="list-style-type: none"> ▪ Services which offer temporary substitute supports or living arrangements for care recipients in order to provide a brief period of rest or relief for caregivers. 	<p>Kokua Kalihi Valley</p>

HAWAII COUNTY

TITLE III E PROGRAMS

○ Caregiver Respite

- In-Home Respite (ie. Homemaker, Personal Care, Assisted Transportation)
 - Contract with CareResources Hawaii, Nurse Pro-Care, Seniors Helping Seniors, Mastercare Inc., Metrocare Hawaii-PLUS

○ Caregiver Counseling

- Hawaii Island Adult Care and Mastercare, Inc.
- Annual Caregiver Conference
 - “Caregivers First – A Carousel of Care”
 - Teach caregivers how to take care of themselves first
 - Topics: Fall Prevention, Elder Abuse, Improving the Quality of Life at Home, Palliative Care, Fraud Education



INSIGHTS

- The Aging Network is a Non-Medical model, that provides funding for home and community based long-term services and supports.
 - Social Model not intended to provide medical training for family caregivers
- Aging Network/ADRC consumers are individuals,
 - 60 years and older, or under 60 with a disability;
 - Diagnosed with Alzheimer's or related dementia;
 - Family caregivers; or
 - Grandparents raising grandchildren
- Family caregivers are a direct recipient of Title III E Funding
 - But also an indirect beneficiary of Kupuna Care and other Title III funding



**CHALLENGES &
OPPORTUNITIES**
AGENCIES PERSPECTIVE

